



INTERSTATE-McBEE



**New
Replacement Parts for
NAVISTAR®/
INTERNATIONAL ENGINE®
DT360 / DT408 / DT466 / I530
ENGINES**



INTERSTATE-McBEE, LLC

5300 Lakeside Avenue • Cleveland, Ohio 44114-3996 U.S.A.
216-881-0015 • Toll Free: 1-800-321-4234 • Fax: 216-881-0805
www.interstate-mcbee.com • E-mail: sales@interstate-mcbee.com

All original manufacturer's names, numbers, symbols and descriptions are used for reference purposes only and do not imply that any part listed is the product of this manufacturer.

® HEUI is a Registered Trademark of Caterpillar, Inc.

© 2012 International/Navistar is a Registered Trademark of the International Truck and Engine Corporation.



INTERSTATE-McBEE



INDEX

| | |
|---------------------------------|-------|
| Engine Identification | 3 |
| Engine Kit Quick Reference..... | 4-5 |
| DT360 / DTA360 | 6-7 |
| DT466 A/B/C to 1993 | 8-11 |
| DT408 / DT466P / I530P PLN | 12-14 |
| DT466E / I530 Electronic | 15-18 |
| DT466E / DT570 / HT570 | 19-20 |
| HEUI® Injectors..... | 21-23 |
| Warranty Policy | 24-25 |

INTERSTATE-McBEE, LLC

5300 Lakeside Avenue • Cleveland, Ohio 44114-3996 U.S.A.
216-881-0015 • Toll Free: 1-800-321-4234 • Fax: 216-881-0805
www.interstate-mcbee.com • E-mail: sales@interstate-mcbee.com

BASIC ENGINE IDENTIFICATION

Example 468GM2U569749

| 468 | G | M2 | U | 569749 |
|--------------------------|-----------------------|--------------|---------|--------|
| Engine Model | Configuration | Application | Origin | Unit # |
| 360 = A model | B = Turbo JWAC | A2 = Service | U = USA | |
| 361 = B model | | | | |
| 362 = C model | D = Natural Aspirated | M2 = Truck | | |
| 408 | G = Turbo Air to Air | | | |
| 466 = A model | H = HEUI | | | |
| 467 = B model | | | | |
| 468 = C model | T = Turbo | | | |
| 469 = 1st new generation | | | | |
| 470 = 2nd new generation | | | | |
| 466H = MY2004 | | | | |
| 530 = A model | | | | |
| 531 = B model | | | | |

All of the above models are inline six cylinder diesel engines built on a common platform. The different displacements produced are achieved by bore and stroke variation.

ESN location:

The complete engine serial number (ESN) is stamped on a pad on the side of the cylinder block. For units built prior to model year 2000 the location was on the left hand side of the block just below the cylinder head to cylinder block parting line. For model year 2000 and newer units the serial location was moved to the right side of the cylinder block between the oil cooler and top of the block.

Emission Label:

The emission label is located on top of the rocker cover or intake manifold. The engine model, model year, horsepower rating and torque rating can be obtained from this label.

This information is required to determine the correct components for most units built post 1993.

ENGINE KIT QUICK REFERENCE

IN-FRAME KIT MATRIX

| ESN PREFIX | MODEL | UNIT # | YEAR | HP RATING | TORQUE | IN-FRAME KIT |
|-------------|--------|--------------------|-------------|-----------|------------|------------------------------|
| 360/361/362 | DT 360 | 39375 & above | 1988 - 1991 | ALL | ALL | M-1817253C96 |
| 408 | DT408 | 850654 & above | 1993-1994 | ALL | ALL | M-1826322C95 |
| 466/467/468 | DT466 | 439618 & below | 1978-1984 | ALL | ALL | MCIF466-4-E |
| | DT466 | 439619 & above | 1984-1993 | ALL | ALL | MCIF466-4-L |
| 466/467/468 | DT466 | 439618 & below | 1978-1984 | ALL | ALL | MCIF7520E |
| | DT466 | 439619 & above | 1984-1993 | ALL | ALL | MCIF7520L |
| 469G | DT466P | 850654 to 888340 | 1993-1994 | ALL | ALL | M-1830063 |
| 469G | DT466P | 888341 & above | 1995-1997 | 175ST | 430 @ 1700 | M-1824824C97 |
| | | | | 190ST | 485 @ 1700 | |
| | | | | 195HT | 520 @ 1500 | |
| | | | | 210ST | 605 @ 1700 | |
| | | | | 210HT | 605 @ 1500 | |
| | | | | 230ST | 605 @ 1700 | |
| 469G | DT466P | 888341 & above | 1995-1997 | 230HT | 660 @ 1500 | M-1824821 |
| | | | | 250HT | 660 @ 1500 | |
| 469H | DT466E | 980820 to 1194038 | 1995-1999 | 175ST | 430 @ 1500 | M-1841391C91 |
| | | | | 190ST | 485 @ 1500 | |
| | | | | 195HT | 520 @ 1450 | |
| | | | | 210ST | 520 @ 1500 | |
| 469H | DT466E | 980820 to 1126948 | 1995-1998 | 210HT | 605 @ 1450 | M-1833446 |
| | | | | 230ST | 605 @ 1500 | |
| | | | | 230HT | 660 @ 1450 | |
| | | | | 250HT | 660 @ 1450 | |
| 469H | DT466E | 1126949 to 1194038 | 1999 | 230HT | 660 @ 1450 | M-1830566C96 |
| | | | | 250HT | 660 @ 1450 | |
| 470 | DT466E | 1194039 to MY2004 | 2000-2003 | 175ST | 460 @ 1400 | M-1836195C96 M-1888653C93 |
| | | | | 195ST | 520 @ 1400 | |
| | | | | 195HT | 560 @ 1400 | |
| | | | | 215ST | 540 @ 1400 | |
| | | | | 215ST | 560 @ 1400 | |
| | | | | 215HT | 620 @ 1400 | |
| 470 | DT466E | 1194039 to MY2004 | 2000-2003 | 230ST | 620 @ 1400 | M-1836300C94 M-1889992C92 |
| | | | | 230HT | 660 @ 1400 | |
| | | | | 250ST | 660 @ 1400 | |
| | | | | 250HT | 800 @ 1400 | |

ST = standard torque HT = high torque (See emission label)

ENGINE KIT QUICK REFERENCE

IN-FRAME KIT MATRIX

| ESN PREFIX | MODEL | UNIT # | YEAR | HP RATING | TORQUE | IN-FRAME KIT |
|------------|--------|--------------------------|-------------|-------------|------------|--------------|
| 466H | DT466E | 2000000 to MY2005 | 2004 | 210ST | 520 @ 1400 | M-1879703C94 |
| | | | | 220ST | 540 @ 1400 | |
| | | | | 225ST | 560 @ 1400 | |
| | | | | 225HT | 620 @ 1400 | |
| 466H | DT466E | 2000000 to MY2005 | 2004 | 245ST | 620 @ 1400 | M-1879705C93 |
| | | | | 245HT | 660 @ 1400 | |
| | | | | 255ST | 660 @ 1400 | |
| | | | | 260HT | 800 @ 1400 | |
| | | | | 285HT | 800 @ 1400 | |
| | | | | 300HT | 860 @ 1400 | |
| 466H | DT466E | approx.2046901 to MY2007 | 2005-2006 | 175ST | 460 @ 1400 | M-1880991C94 |
| | | | | 195ST | 520 @ 1400 | |
| | | | | 195HT | 560 @ 1400 | |
| | | | | 215ST | 540 @ 1400 | |
| | | | | 215ST | 560 @ 1400 | |
| | | | | 215HT | 620 @ 1400 | |
| 466H | DT466E | approx.2046901 to MY2007 | 2005-2006 | 175ST | 460 @ 1400 | M-1885597C92 |
| | | | | 195ST | 520 @ 1400 | |
| | | | | 195HT | 560 @ 1400 | |
| | | | | 215ST | 540 @ 1400 | |
| | | | | 215ST | 560 @ 1400 | |
| | | | | 215HT | 620 @ 1400 | |
| 530G | 530PLN | | 1993-1997 | Below 300 | All | M-1833447C95 |
| 530G | 530PLN | 915841 & above | 1993-1997 | 300 | All | M-1841285C93 |
| 530H | DT530E | 1194038 & below | 1995-1999 | Below 300 | All | M-1836012C95 |
| 530H | DT530E | 1194038 & below | 1995-1999 | 300 & above | All | M-1833445C96 |
| 531H | DT530E | 1194039 to MY2004 | 2000-6/2004 | 275 & below | All | M-1830718C98 |
| | | | | | | M-1876205C91 |
| 531H | DT530E | 1194039 to MY2004 | 2000-6/2004 | 300 & above | All | M-1841902C91 |
| | | | | | | M-1841897C94 |

ST = standard torque HT = high torque (See emission label)

DT360 / DT360A

IN-FRAME KIT

| PART # | QTY | DESCRIPTION | NOTE |
|--------------|-----|--------------|---------------------|
| M-1817253C96 | 1 | In-Frame Kit | ESN 39375 to 112786 |

CYLINDER COMPONENTS

| PART # | QTY | DESCRIPTION | NOTE |
|--------------|-----|--------------|-----------------------|
| M-1817250C92 | 6 | Cylinder Kit | % ESN 39375 to 112786 |
| M-1817178C2 | 6 | Piston | % ESN 39375 to 112786 |

| | | | |
|---------------|----|--------------------|-----------------------|
| M-1809935C4 | 6 | Cylinder Liner | |
| M-1809935C4WS | 6 | Cylinder Liner Kit | With liner o-rings |
| M-1809938C91 | 6 | Liner Packing Kit | O-rings for one liner |
| M-1817251C91 | 6 | Ring Set | |
| M-1809914C1 | 6 | Piston Pin | |
| M-326751R1 | 12 | Pin Retainer | |

ENGINE BEARINGS

% Note: These must be used in full sets only

| PART # | QTY | DESCRIPTION | NOTE |
|--------------|-----|------------------------------|------|
| M-1823863C91 | 6 | Connecting Rod Bearing STD | |
| M-1823864C91 | 6 | Connecting Rod Bearing .010" | |
| M-1823865C91 | 6 | Connecting Rod Bearing .020" | |
| M-1823866C91 | 6 | Connecting Rod Bearing .030" | |

| | | | |
|--------------|---|------------------------|--|
| M-1823859C91 | 1 | Main Bearing Set STD | |
| M-1823860C91 | 1 | Main Bearing Set .010" | |
| M-1823861C91 | 1 | Main Bearing Set .020" | |
| M-1823862C91 | 1 | Main Bearing Set .030" | |

| | | | |
|-------------|---|------------------------|--|
| M-680117C1 | 1 | Cam Bearing Set | |
| M-1810049C1 | 6 | Connecting Rod Bushing | |
| M-327185R91 | 1 | Idler Bearing | |

GASKET SETS

| PART # | QTY | DESCRIPTION | NOTE |
|--------------|-----|------------------------------|------|
| M-1817255C95 | 1 | Upper Gasket Set | |
| M-1815668C93 | 1 | Lower Gasket Set | |
| M-1813933C96 | 1 | Front Cover Gasket Set | |
| M-1817256C98 | 1 | Overhaul Gasket Set Complete | |

DT360 / DT360A

CYLINDER HEAD COMPONENTS

| PART # | QTY | DESCRIPTION | NOTE |
|--------------|-----|----------------------------------|-----------------------|
| M-676687C4 | 6 | Intake Valve | |
| M-671602C1 | 6 | Intake Seat .002" OSOD | |
| M-671604C1 | 6 | Intake Seat .015" OSOD | |
| M-1810086C2 | 6 | Exhaust Valve | |
| M-671599C1 | 6 | Exhaust Seat .002" OSOD | |
| M-671601C1 | 6 | Exhaust Seat .015" OSOD | |
| M-41339D | 24 | Valve Lock | |
| M-675439C1 | 12 | Valve Guide | ESN ≤ 72706 (2.750"L) |
| M-1815264C1 | 12 | Valve Guide | ESN ≥ 72707 (2.610"L) |
| M-682064C1 | 12 | Valve Spring | |
| M-1811581C91 | 12 | Rotator Assembly (with shield) | ESN ≤ 72706 |
| M-1817661C91 | 12 | Rotator Assembly | ESN ≥ 72707 |
| M-681234C1 | 12 | Rotator Shield | ESN ≤ 72706 |
| M-1815374C1 | 12 | Valve Stem Seal (top hat) | ESN ≥ 72707 |
| M-675442C1 | 6 | Injector Sleeve | |
| M-1802340C1 | 12 | Valve Lifter - Solid (1.120" OD) | |

CRANKSHAFT SEALS

| PART # | QTY | DESCRIPTION | NOTE |
|--------------|-----|---------------------------|------|
| M-690437C93 | 1 | Front Crankshaft Seal Kit | |
| M-1809964C92 | 1 | Rear Crankshaft Seal Kit | |

THERMOSTAT

| PART # | QTY | DESCRIPTION | NOTE |
|--------------|-----|---------------------|------------------------|
| M-1801191C91 | 1 | Thermostat Kit 180° | Includes seal & gasket |

WATER PUMP

| PART # | QTY | DESCRIPTION | NOTE |
|--------------|-----|----------------------------|--------------------|
| M-685155C94 | 1 | Water Pump Prior to 10/91 | 6 bolt fan drive |
| M-1815538C91 | 1 | Water Pump 10/91 and later | Screw on fan drive |

GASKET LISTING

| PART # | QTY | DESCRIPTION | NOTE |
|-------------|-----|--------------------------------|--------------|
| M-1810169C2 | 1 | Exhaust Manifold Gasket | |
| M-1810510C3 | 1 | Front Cover Gasket | |
| M-675812C2 | 1 | Front End Plate Gasket | ESN ≤ 54458 |
| M-1813962C1 | 1 | Front End Plate Gasket | ESN ≥ 54459 |
| M-675609C1 | 1 | Injection Pump Gasket | |
| M-675477C1 | 6 | Injector Nozzle Gasket | Stanadyne |
| M-682199C2 | 1 | Intake Manifold Gasket | |
| M-675513C1 | 2 | Oil Cooler Gasket | |
| M-671825C4 | 1 | Oil Pan Gasket | |
| M-59658D | 1 | Oil Pan Drain Gasket | |
| M-1802867C1 | 1 | Oil Pickup Tube Gasket | ESN ≥ 466776 |
| M-675389C1 | 1 | Rocker Cover Gasket | |
| M-677692C2 | 6 | Rocker Cover Grommet | |
| M-670073C2 | 1 | Turbocharger Mounting Gasket | |
| M-253660R2 | 1 | Turbocharger Oil Supply Gasket | |
| M-670079C3 | 1 | Turbocharger Oil Drain Gasket | |

DT466 A/B/C TO 1993

IN-FRAME KITS

| PART # | QTY | DESCRIPTION | NOTE |
|-----------|-----|--------------|----------------------------------|
| MCIF7520E | 1 | In-Frame Kit | ESN 75000 to 439618 |
| MCIF7520L | 1 | In-Frame Kit | ESN 436619 to 1st New Generation |

| | | | |
|-------------|---|--------------------------------|----------------------------------|
| MCIF466-4-E | 1 | In-Frame Kit w/ 4-Ring Pistons | ESN 1 to 439618 |
| MCIF466-4-L | 1 | In-Frame Kit w/ 4-Ring Pistons | ESN 436619 to 1st New Generation |

OVERHAUL KITS

| PART # | QTY | DESCRIPTION | NOTE |
|-----------|-----|--------------|----------------------------------|
| MCOH7520E | 1 | Overhaul Kit | ESN 75000 to 439618 |
| MCOH7520L | 1 | Overhaul Kit | ESN 439619 to 1st New Generation |

| | | | |
|-------------|---|--------------------------------|----------------------------------|
| MCOH466-4-E | 1 | Overhaul Kit w/ 4-Ring Pistons | ESN 1 to 439618 |
| MCOH466-4-L | 1 | Overhaul Kit w/ 4-Ring Pistons | ESN 439619 to 1st New Generation |

CYLINDER COMPONENTS

| PART # | QTY | DESCRIPTION | NOTE |
|-------------|-----|---------------------------------|-----------------------------|
| M-CK466-4 | 6 | Cylinder Kit w/ 4-Ring Piston % | ESN 1 to 1st New Generation |
| M-MCB466-4 | 6 | 4-Ring Piston % | |
| M-RS466-4 | 6 | Ring Set for 4-Ring Piston | |
| M-670675C1 | 6 | Piston Pin | |
| M-326874R1 | 12 | Pin Retainer | |
| M-1810504C1 | 6 | Cylinder Liner | |
| M-680086C1 | 6 | Liner Packing Kit | O-rings for one liner |

| | | | |
|--------------|----|-------------------|-----------------------|
| M-1817645 | 6 | Cylinder Kit % | ESN 75000 to 439618 |
| M-1817520C2 | 6 | Piston % | |
| M-1817247C91 | 6 | Ring Set | |
| M-670675C1 | 6 | Piston Pin | |
| M-326874R1 | 12 | Pin Retainer | |
| M-1810504C1 | 6 | Cylinder Liner | |
| M-680086C1 | 6 | Liner Packing Kit | O-rings for one liner |

| | | | |
|------------|----|---------------|--|
| M-675774C2 | 18 | Liner O-rings | |
|------------|----|---------------|--|

% **Note:** These must be used in full sets only.

DT466 A/B/C TO 1993

ENGINE BEARINGS

| PART # | QTY | DESCRIPTION | NOTE |
|--------------|-----|------------------------------|------------------------|
| M-681314C3 | 6 | Connecting Rod Bearing STD | ESN ≤ 439618 (1.195"W) |
| M-681315C3 | 6 | Connecting Rod Bearing .010" | |
| M-687382C3 | 6 | Connecting Rod Bearing .020" | |
| M-681316C3 | 6 | Connecting Rod Bearing .030" | |
| M-1808059C92 | 6 | Connecting Rod Bearing STD | ESN ≥ 439619 (1.255"W) |
| M-1808060C92 | 6 | Connecting Rod Bearing .010" | |
| M-1808061C92 | 6 | Connecting Rod Bearing .020" | |
| M-1808062C92 | 6 | Connecting Rod Bearing .030" | |
| M-684570C93 | 6 | Main Bearing STD | ESN ≤ 439618 (1.220"W) |
| M-684579C93 | 1 | Main Bearing STD | |
| M-684573C93 | 6 | Main Bearing .010" | |
| M-684582C93 | 1 | Main Bearing .010" | |
| M-687391C3 | 6 | Main Bearing .020" | |
| M-687394C3 | 1 | Main Bearing .020" | |
| M-684576C93 | 6 | Main Bearing .030" | |
| M-684585C93 | 1 | Main Bearing .030" | |
| M-1808069C92 | 6 | Main Bearing STD | ESN ≥ 439619 (1.293"W) |
| M-684579C93 | 1 | Main Bearing STD | |
| M-1808070C92 | 6 | Main Bearing .010" | |
| M-684582C93 | 1 | Main Bearing .010" | |
| M-1808071C92 | 6 | Main Bearing .020" | |
| M-687394C3 | 1 | Main Bearing .020" | |
| M-1808072C92 | 6 | Main Bearing .030" | |
| M-684585C93 | 1 | Main Bearing .030" | |
| M-680117C1 | 1 | Cam Bearing Set | |
| M-675006C1 | 6 | Connecting Rod Bushing | |
| M-327185R91 | 1 | Idler Bearing | |

GASKET SETS

| PART # | Qty | DESCRIPTION | NOTE |
|--------------|-----|-------------------------------------|--------------|
| M-1817254C96 | 1 | Upper Gasket Set | |
| M-674399C96 | 1 | Lower Gasket Set | ESN ≤ 567491 |
| M-1815668C93 | 1 | Lower Gasket Set | ESN ≥ 567492 |
| MCB674399 | 1 | Lower Gasket Set (with crank seals) | ESN ≤ 567491 |
| MCB1815668 | 1 | Lower Gasket Set (with crank seals) | ESN ≥ 567492 |
| M-680084 | 1 | Front Cover Gasket Set | ESN ≤ 567491 |
| M-1813933C96 | 1 | Front Cover Gasket Set | ESN ≥ 567492 |

DT466 A/B/C TO 1993

CYLINDER HEAD COMPONENTS

| PART # | QTY | DESCRIPTION | NOTE |
|--------------|-----|--------------------------------|------------------------|
| M-675046C4 | 6 | Intake Valve | |
| M-671559C1 | 6 | Intake Seat .002" OSOD | |
| M-671561C1 | 6 | Intake Seat .015" OSOD | |
| M-676865C4 | 6 | Exhaust Valve | |
| M-671563C1 | 6 | Exhaust Seat .002" OSOD | |
| M-671565C1 | 6 | Exhaust Seat .015" OSOD | |
| M-41339D | 24 | Valve Lock | |
| M-675439C1 | 12 | Valve Guide | ESN ≤ 594839 (2.750"L) |
| M-1815264C1 | 12 | Valve Guide | ESN ≥ 594840 (2.610"L) |
| M-682064C1 | 12 | Valve Spring | ESN ≤ 532980 (2.340"L) |
| M-677349C1 | 12 | Valve Spring | ESN ≥ 532981 (2.292"L) |
| M-1811581C91 | 12 | Rotator Assembly (with shield) | ESN ≤ 594839 |
| M-1817661C91 | 12 | Rotator Assembly | ESN ≥ 594840 |
| M-681234C1 | 12 | Rotator Shield | ESN ≤ 594839 |
| M-1815374C1 | 12 | Valve Stem Seal (top hat) | ESN ≥ 594840 |
| M-675442C1 | 6 | Injector Sleeve | |
| M-682840C1 | 12 | Exhaust Manifold Stud | |

CRANKSHAFT & SEALS

| PART # | QTY | DESCRIPTION | NOTE |
|--------------|-----|---------------------------|------|
| M-675669C92 | 1 | Crankshaft | |
| M-690437C93 | 1 | Front Crankshaft Seal Kit | |
| M-1809964C92 | 1 | Rear Crankshaft Seal Kit | |

CAMSHAFT & LIFTERS

| PART # | QTY | DESCRIPTION | NOTE |
|-------------|-----|----------------------------------|----------------------|
| M-1802337C1 | 1 | Solid Lifter Camshaft | ESN 143536 to 532980 |
| M-1810744C1 | 1 | Roller Lifter Camshaft | ESN ≥ 532981 |
| M-911776R3 | 12 | Valve Lifter - Solid (.997" OD) | ESN ≤ 140086 |
| M-1802340C1 | 12 | Valve Lifter - Solid (1.120" OD) | ESN 140087 to 532980 |
| M-1809570C1 | 12 | Valve Lifter - Roller | ESN ≥ 532981 |

OIL COOLER

| PART # | QTY | DESCRIPTION | NOTE |
|-------------|-----|------------------|--------------|
| M-1810171C2 | 1 | Cooler Cartridge | ESN ≥ 517250 |
| M-675513C1 | 2 | Mounting Gasket | |
| M-252483R1 | 4 | Seal Ring | |

OIL PUMP

| PART # | QTY | DESCRIPTION | NOTE |
|--------------|-----|-----------------------|--------------|
| M-1802666C92 | 1 | Rotor Set 1.00" Thick | ESN ≤ 466775 |
| M-1808832C92 | 1 | Rotor Set 1.25" Thick | ESN ≥ 466776 |

DT466 A/B/C TO 1993

THERMOSTAT

| PART # | QTY | DESCRIPTION | NOTE |
|--------------|-----|---------------------|------------------------|
| M-1801191C91 | 1 | Thermostat Kit 180° | Includes seal & gasket |

WATER PUMPS

| PART # | QTY | DESCRIPTION | NOTE |
|--------------|-----|-------------|---------------------------------|
| M-685155C94 | 1 | Water Pump | ESN ≤ 642459 S-series & Paystar |
| M-680899C2 | 1 | Water Pump | ESN ≤ 642459 Cargostar |
| M-1815538C91 | 1 | Water Pump | ESN ≥ 642460 screw on fan drive |

GASKET LISTING

| PART # | QTY | DESCRIPTION | NOTE |
|-------------|-----|--------------------------------|---------------------------------|
| M-673973C4 | 1 | Breather Mounting Gasket | ESN ≤ 618496 |
| M-688928C2 | 6 | Exhaust Manifold Gasket | |
| M-677082 | 1 | Front Cover Gasket | Cargostar |
| M-675813C2 | 1 | Front Cover Gasket | ESN ≤ 532980 S-series & Paystar |
| M-1810510C3 | 1 | Front Cover Gasket | ESN ≥ 532981 |
| M-683791C2 | 1 | Front End Plate Gasket | Cargostar |
| M-675812C2 | 1 | Front End Plate Gasket | ESN ≤ 532980 Paystar |
| M-675812C2 | 1 | Front End Plate Gasket | ESN ≤ 567491 S-series |
| M-1813962C1 | 1 | Front End Plate Gasket | ESN ≥ 567492 |
| M-674754C1 | 1 | Injection Pump O-ring | |
| M-675609C1 | 1 | Injection Pump Gasket | |
| M-675477C1 | 6 | Injector Nozzle Gasket | |
| M-682199C2 | 1 | Intake Manifold Gasket | |
| M-675513C1 | 2 | Oil Cooler Gasket | |
| M-671827C4 | 1 | Oil Pan Gasket | |
| M-59658D | 1 | Oil Pan Drain Gasket | |
| M-671821C2 | 1 | Oil Pickup Tube Gasket | ESN ≤ 466775 |
| M-1802867C1 | 1 | Oil Pickup Tube Gasket | ESN ≥ 466776 |
| M-675109C3 | 1 | Rocker Cover Gasket | |
| M-677692C2 | 6 | Rocker Cover Grommet | |
| M-670073C2 | 1 | Turbocharger Mounting Gasket | |
| M-253660R2 | 1 | Turbocharger Oil Supply Gasket | |
| M-670079C3 | 1 | Turbocharger Oil Drain Gasket | |

DT408/DT466P/I530P PLN (1993-1997)

IN-FRAME KITS

| PART # | 408 | 466 | 530 | DESCRIPTION | NOTE |
|--------------|-----|-----|-----|-----------------------------|-----------------------------------|
| M-1826322C96 | 1 | | | In-Frame Kit (1822332C95) | |
| M-1830063 | | 1 | | In-Frame Kit (M-1822340) | ESN ≤ 888340 |
| M-1824824C97 | | 1 | | In-Frame Kit (M-1824823) | ESN ≥ 888341 175HP-230HP ST |
| M-1824821 | | 1 | | In-Frame Kit (1824820) | ESN ≥ 888341 230HP HT & 250HP all |
| M-1833447C95 | | | 1 | In-Frame Kit (M-1822333C95) | Below 300HP |

CYLINDER COMPONENTS

| PART # | 408 | 466 | 530 | DESCRIPTION | NOTE |
|--------------|-----|-----|-----|---------------------|-----------------------|
| M-1822332C95 | 6 | | | Cylinder Kit | |
| M-1822217C3 | 6 | | | Piston | |
| M-1817247C91 | 6 | | | Ring Set | |
| M-1818552 | 6 | | | Piston Pin | |
| M-1818702 | 12 | | | Pin Retainer | |
| M-1815674C1 | 6 | | | Cylinder Liner | |
| M-1822322 | 6 | | | Liner Packing Kit | O-rings for one liner |

| | | | | | |
|--------------|--|----|--|---------------------|-----------------------|
| M-1822340 | | 6 | | Cylinder Kit | ESN ≤ 888340 |
| M-1822097 | | 6 | | Piston | |
| M-1817247C91 | | 6 | | Ring Set | |
| M-1818552 | | 6 | | Piston Pin | |
| M-1818702 | | 12 | | Pin Retainer | |
| M-1815674C1 | | 6 | | Cylinder Liner | |
| M-1822322 | | 6 | | Liner Packing Kit | O-rings for one liner |

| | | | | | |
|-------------|--|----|--|---------------------|------------------------------|
| M-1824823 | | 6 | | Cylinder Kit | ESN ≥ 888341 175HP -230HP ST |
| M-1824810 | | 6 | | Piston | |
| M-1825461 | | 6 | | Ring Set | |
| M-1818552 | | 6 | | Piston Pin | |
| M-1818702 | | 12 | | Pin Retainer | |
| M-1815674C1 | | 6 | | Cylinder Liner | |
| M-1822322 | | 6 | | Liner Packing Kit | O-rings for one liner |

| | | | | | |
|--------------|--|----|--|---------------------|-----------------------------------|
| M-1824820 | | 6 | | Cylinder Kit | ESN ≥ 888341 230HP HT & 250HP all |
| M-1823930 | | 6 | | Piston | |
| M-1817247C91 | | 6 | | Ring Set | |
| M-1818552 | | 6 | | Piston Pin | |
| M-1818702 | | 12 | | Pin Retainer | |
| M-1815674C1 | | 6 | | Cylinder Liner | |
| M-1822322 | | 6 | | Liner Packing Kit | O-rings for one liner |

| | | | | | |
|--------------|--|--|----|----------------------------------|------------------------|
| M-1822333C95 | | | 6 | Cylinder Kit - 1pc piston | 250HP ST & 275HP ST/HT |
| M-1822098C3 | | | 6 | Piston | |
| M-1822337C91 | | | 6 | Ring Set | |
| M-1818552 | | | 6 | Piston Pin | |
| M-1818702 | | | 12 | Pin Retainer | |
| M-1841326C1 | | | 6 | Cylinder Liner | |
| M-1822322 | | | 6 | Liner Packing Kit | O-rings for one liner |

DT408/DT466P/I530P PLN (1993-1997)

ENGINE BEARINGS

| PART # | 408 | 466 | 530 | DESCRIPTION | NOTE |
|-------------|-----|-----|-----|------------------------------|------|
| M-1822389 | 6 | 6 | 6 | Connecting Rod Bearing STD | |
| M-1822486 | 6 | 6 | 6 | Connecting Rod Bearing .010" | |
| M-1822487 | 6 | 6 | 6 | Connecting Rod Bearing .020" | |
| M-1822488 | 6 | 6 | 6 | Connecting Rod Bearing .030" | |
| M-1822321 | 6 | 6 | 6 | Main Bearing STD | |
| M-1822379 | 1 | 1 | 1 | Main Bearing STD | |
| M-1822490 | 6 | 6 | 6 | Main Bearing .010" | |
| M-1822494 | 1 | 1 | 1 | Main Bearing .010" | |
| M-1822491 | 6 | 6 | 6 | Main Bearing .020" | |
| M-1822495 | 1 | 1 | 1 | Main Bearing .020" | |
| M-1822492 | 6 | 6 | 6 | Main Bearing .030" | |
| M-1822496 | 1 | 1 | 1 | Main Bearing .030" | |
| M-680117C1 | 1 | 1 | 1 | Cam Bearing Set | |
| M-1818598C1 | 6 | 6 | 6 | Connecting Rod Bushing | |

GASKET SETS

| PART # | 408 | 466 | 530 | DESCRIPTION | NOTE |
|--------------|-----|-----|-----|--------------------------------------|------|
| M-1822328C94 | 1 | 1 | 1 | Upper Gasket Set | |
| M-1830374C95 | 1 | 1 | 1 | Lower Gasket Set | |
| M-1822365C99 | 1 | 1 | 1 | Front Cover Gasket Set | |
| M-1823181C92 | 1 | 1 | 1 | Turbocharger Installation Gasket Set | |
| M-1823182C95 | 1 | 1 | 1 | Oil Cooler Installation Gasket Set | |
| M-1826587C1 | 1 | 1 | 1 | Oil Pan Gasket | |
| M-1816722 | 1 | 1 | 1 | Oil Suction Gasket | |

CRANKSHAFT & SEALS

| PART # | 408 | 466 | 530 | DESCRIPTION | NOTE |
|--------------|-----|-----|-----|---------------------------|------|
| M-1821982C91 | 1 | | | Crankshaft | |
| M-1821981C91 | | 1 | 1 | Crankshaft | |
| M-690437C95 | 1 | 1 | 1 | Front Crankshaft Seal Kit | |
| M-1817867C2 | 1 | 1 | 1 | Rear Crankshaft Seal Kit | |

THERMOSTAT

| PART # | 408 | 466 | 530 | DESCRIPTION | NOTE |
|--------------|-----|-----|-----|---------------------|------|
| M-1830256C93 | 1 | 1 | 1 | Thermostat Kit 190° | |

WATER PUMP

| PART # | 408 | 466 | 530 | DESCRIPTION | NOTE |
|-----------|-----|-----|-----|-------------|------|
| M-1817687 | 1 | 1 | 1 | Water Pump | |

DT408/DT466P/I530P PLN (1993-1997)

CYLINDER HEAD PARTS

(PLN Injection & 5/16" Valve Stem) ESN ≤ 956463)

| PART # | 408 | 466 | 530 | DESCRIPTION | NOTE |
|--------------|-----|-----|-----|---------------------------|---------------|
| M-1818580C1 | 6 | 6 | 6 | Intake Valve | |
| M-675043C1 | 6 | 6 | 6 | Intake Seat | |
| M-1824838C1 | 6 | 6 | 6 | Exhaust Valve | |
| M-675450C1 | 6 | 6 | 6 | Exhaust Seat | |
| M-1810944 | 24 | 24 | 24 | Valve Lock | |
| M-1820264 | 12 | 12 | 12 | Valve Guide | |
| M-677349C1 | 6 | 6 | 6 | Valve Spring - Intake | |
| M-1825540C1 | 6 | 6 | 6 | Valve Spring - Exhaust | |
| M-1820826C91 | 12 | 12 | 12 | Rotator Retainer w/Shield | |
| M-1819380C1 | 12 | 12 | 12 | Rotator Shield | |
| M-1822245C1 | 12 | 12 | 12 | Valve Stem Seal | Top hat style |
| M-675442C1 | 6 | 6 | 6 | Injector Sleeve | |
| M-1809570C1 | 12 | 12 | 12 | Roller Tappet | |

CYLINDER HEAD PARTS

(PLN Injection & 3/8" Valve Stem) ESN ≥ 956464)

| PART # | 408 | 466 | 530 | DESCRIPTION | NOTE |
|-------------|-----|-----|-----|---------------------------|---------------|
| M-1824642 | 6 | 6 | 6 | Intake Valve | |
| M-675043C1 | 6 | 6 | 6 | Intake Seat | |
| M-1824842 | 6 | 6 | 6 | Exhaust Valve | |
| M-675450C1 | 6 | 6 | 6 | Exhaust Seat | |
| M-1824644 | 24 | 24 | 24 | Valve Lock | |
| M-1824646C1 | 12 | 12 | 12 | Valve Guide | |
| M-677349C1 | 6 | 6 | 6 | Valve Spring - Intake | |
| M-1825540C1 | 6 | 6 | 6 | Valve Spring - Exhaust | |
| M-1824680C1 | 12 | 12 | 12 | Rotator Retainer w/Shield | |
| M-1824683C1 | 12 | 12 | 12 | Rotator Shield | |
| M-1823925C1 | 12 | 12 | 12 | Valve Stem Seal | Top hat style |
| M-675442C1 | 6 | 6 | 6 | Injector Sleeve | |
| M-1809570C1 | 12 | 12 | 12 | Roller Tappet | |

DT466E/1530 ELECTRONIC

(ESN 980820 TO 2000000)

IN-FRAME KITS

| PART # | 466E | 530E | DESCRIPTION | NOTE |
|--------------|------|------|---------------------------------|--|
| M-1841391C91 | 1 | | In-Frame Kit (M-1825690) | ESN 980820 - 1194038 175HP-210HP ST |
| M-1833446 | 1 | | In-Frame Kit (M-1824966) | ESN ≤ 1126948 210HP HT & 230HP-250HP All |
| M-1830566 | 1 | | In-Frame Kit (M-1830565) | ESN 1126949 - 1194038 230HP-250HP All |
| M-1836195C96 | 1 | | In-Frame Kit (M-1836192C91) | ESN ≥ 1194039 175HP-215HP All |
| M-1836300C94 | 1 | | In-Frame Kit (M-1836299C91) | ESN ≥ 1194039 230HP-250HP All |
| M-1836012C94 | | 1 | In-Frame Kit (M-1825547C94) 1pc | ESN 981120 - 1194038 250HP-275HP All |
| M-1833445C95 | | 1 | In-Frame Kit (M-1825548C95) 2pc | ESN 981120 - 1194038 300HP & up |
| M-1830718C98 | | 1 | In-Frame Kit (M-1830715C93) 1pc | ESN ≥ 1194039 250HP-275HP All |
| M-1841902C91 | | 1 | In-Frame Kit (M-1830716C95) 2pc | ESN ≥ 1194039 300HP & up |

CYLINDER COMPONENTS

| PART # | 466E | 530E | DESCRIPTION | NOTE |
|-------------|------|------|---------------------|-------------------------------------|
| M-1825690 | 6 | | Cylinder Kit | ESN 980820 - 1194038 175HP-210HP ST |
| M-1825585 | 6 | | Piston | |
| M-1825461 | 6 | | Ring Set | |
| M-1818552 | 6 | | Piston Pin | |
| M-1818702 | 12 | | Pin Retainer | |
| M-1815674C1 | 6 | | Cylinder Liner | |
| M-1822322 | 6 | | Liner Packing Kit | O-rings for one liner |

| | | | | |
|--------------|----|--|---------------------|--|
| M-1824966 | 6 | | Cylinder Kit | ESN ≤ 1126948 210HP HT & 230HP-250HP All |
| M-1823313 | 6 | | Piston | |
| M-1817247C91 | 6 | | Ring Set | |
| M-1818552 | 6 | | Piston Pin | |
| M-1818702 | 12 | | Pin Retainer | |
| M-1815674C1 | 6 | | Cylinder Liner | |
| M-1822322 | 6 | | Liner Packing Kit | O-rings for one liner |

| | | | | |
|--------------|----|--|---------------------|---------------------------------------|
| M-1830565C91 | 6 | | Cylinder Kit | ESN 1126949 - 1194038 230HP-250HP All |
| M-1830375C1 | 6 | | Piston | |
| M-1817247C91 | 6 | | Ring Set | |
| M-1818552 | 6 | | Piston Pin | |
| M-1818702 | 12 | | Pin Retainer | |
| M-1815674C1 | 6 | | Cylinder Liner | |
| M-1822322 | 6 | | Liner Packing Kit | O-rings for one liner |

| | | | | |
|--------------|----|--|---------------------|-------------------------------|
| M-1836192C91 | 6 | | Cylinder Kit | ESN ≥ 1194039 175HP-215HP All |
| M-1836321C1 | 6 | | Piston | |
| M-1830724C92 | 6 | | Ring Set | |
| M-1830060C1 | 6 | | Piston Pin | |
| M-1818702 | 12 | | Pin Retainer | |
| M-1841326C1 | 6 | | Cylinder Liner | 4.59" bore |
| M-1822322 | 6 | | Liner Packing Kit | O-rings for one liner |

DT466E/1530 ELECTRONIC

(ESN 980820 TO 2000000)

CYLINDER COMPONENTS

| PART # | 466E | 530E | DESCRIPTION | NOTE |
|--------------|------|------|---------------------|-------------------------------|
| M-1836299C91 | 6 | | Cylinder Kit | ESN ≥ 1194039 230HP-250HP All |
| M-1833092C2 | 6 | | Piston | |
| M-1830723C92 | 6 | | Ring Set | |
| M-1830060C1 | 6 | | Piston Pin | |
| M-1818702 | 12 | | Pin Retainer | |
| M-1841326C1 | 6 | | Cylinder Liner | 4.59" bore |
| M-1822322 | 6 | | Liner Packing Kit | O-rings for one liner |

| | | | | |
|--------------|--|----|----------------------------------|--------------------------------------|
| M-1825547C94 | | 6 | Cylinder Kit - 1pc piston | ESN 981120 - 1194038 250HP-275HP All |
| M-1825593C1 | | 6 | Piston | |
| M-1822337C91 | | 6 | Ring Set | |
| M-1818552 | | 6 | Piston Pin | |
| M-1818702 | | 12 | Pin Retainer | |
| M-1841326C1 | | 6 | Cylinder Liner | |
| M-1822322 | | 6 | Liner Packing Kit | O-rings for one liner |

| | | | | |
|--------------|--|----|-----------------------------------|---------------------------------|
| M-1825548C95 | | 6 | Cylinder Kit - X-hd piston | ESN 981120 - 1194038 300HP & up |
| M-1826412C1 | | 6 | Piston | |
| M-1826414C1 | | 6 | Skirt | |
| M-1822337C91 | | 6 | Ring Set | |
| M-1818552 | | 6 | Piston Pin | |
| M-1818702 | | 12 | Pin Retainer | |
| M-1841326C1 | | 6 | Cylinder Liner | |
| M-1822322 | | 6 | Liner Packing Kit | O-rings for one liner |

| | | | | |
|--------------|--|----|----------------------------------|-------------------------------|
| M-1830715C93 | | 6 | Cylinder Kit - 1pc piston | ESN ≥ 1194039 250HP-275HP All |
| M-1830532C2 | | 6 | Piston | |
| M-1830723C92 | | 6 | Ring Set | |
| M-1830060C1 | | 6 | Piston Pin | |
| M-1818702 | | 12 | Pin Retainer | |
| M-1841326C1 | | 6 | Cylinder Liner | |
| M-1822322 | | 6 | Liner Packing Kit | O-rings for one liner |

| | | | | |
|--------------|--|----|-----------------------------------|--------------------------|
| M-1830716C95 | | 6 | Cylinder Kit - X-hd piston | ESN ≥ 1194039 300HP & up |
| M-1836320C1 | | 6 | Piston | |
| M-1833433C1 | | 6 | Skirt | |
| M-1830724C92 | | 6 | Ring Set | |
| M-1830060C1 | | 6 | Piston Pin | |
| M-1818702 | | 12 | Pin Retainer | |
| M-1841326C1 | | 6 | Cylinder Liner | |
| M-1822322 | | 6 | Liner Packing Kit | O-rings for one liner |

DT466E/1530 ELECTRONIC

(ESN 980820 TO 2000000)

ENGINE BEARINGS

ESN ≤ 1194038

| PART # | 466E | 530E | DESCRIPTION | NOTE |
|-----------|------|------|------------------------------|---------------|
| M-1822389 | 6 | 6 | Connecting Rod Bearing STD | ESN ≤ 1194038 |
| M-1822486 | 6 | 6 | Connecting Rod Bearing .010" | |
| M-1822487 | 6 | 6 | Connecting Rod Bearing .020" | |
| M-1822488 | 6 | 6 | Connecting Rod Bearing .030" | |
| M-1822321 | 6 | 6 | Main Bearing STD | ESN ≤ 1194038 |
| M-1822379 | 1 | 1 | Main Bearing STD | |
| M-1822490 | 6 | 6 | Main Bearing .010" | |
| M-1822494 | 1 | 1 | Main Bearing .010" | |
| M-1822491 | 6 | 6 | Main Bearing .020" | |
| M-1822495 | 1 | 1 | Main Bearing .020" | |
| M-1822492 | 6 | 6 | Main Bearing .030" | |
| M-1822496 | 1 | 1 | Main Bearing .030" | |

ENGINE BEARINGS

ESN ≥ 1194039

| PART # | 466E | 530E | DESCRIPTION | NOTE |
|--------------|------|------|----------------------------|---------------|
| M-1842570C92 | 6 | 6 | Connecting Rod Bearing STD | ESN ≥ 1194039 |
| M-1830725C91 | 6 | 6 | Main Bearing STD | ESN ≥ 1194039 |
| M-1830726C91 | 1 | 1 | Main Bearing STD | |
| M-680117C1 | 1 | 1 | Cam Bearing Set | |
| M-1818598C1 | 6 | 6 | Connecting Rod Bushing | |

GASKET SETS

| PART # | 466E | 530E | DESCRIPTION | NOTE |
|--------------|------|------|------------------------------------|----------------|
| M-1824970C99 | 1 | 1 | Upper Gasket Set | ESN ≤ 1194038 |
| M-1830720C94 | 1 | 1 | Upper Gasket Set | ESN ≥ 1194039 |
| M-1830721C94 | | 1 | Upper Gasket Set | ESN ≥ 1194039 |
| M-1874865C91 | 1 | 1 | Lower Gasket Set | |
| M-1824984C94 | 1 | 1 | Front Cover Gasket Set | |
| MCBS0008 | 6 | 6 | Injector Seal Ring Kit | (M-1833564C92) |
| MCBS0007 | 6 | 6 | Injector Internal Seal Ring Kit | |
| M-1823181C92 | 1 | 1 | Turbocharger Install Gasket Set | |
| M-1823182C95 | 1 | 1 | Oil Cooler Installation Gasket Set | |
| M-1826587C1 | 1 | 1 | Oil Pan Gasket | |
| M-1816722 | 1 | 1 | Oil Suction Gasket | |

CRANKSHAFT & SEALS

| PART # | 466E | 530E | DESCRIPTION | NOTE |
|--------------|------|------|---------------------------|---------------|
| M-1830596C91 | 1 | | Crankshaft | ESN ≤ 1194038 |
| M-1830597C91 | 1 | | Crankshaft | ESN ≥ 1194039 |
| M-1830596C91 | | 1 | Crankshaft | |
| M-690437C95 | 1 | 1 | Front Crankshaft Seal Kit | |
| M-1817867C92 | 1 | 1 | Rear Crankshaft Seal Kit | |

DT466E/1530 ELECTRONIC

(ESN 980820 TO 2000000)

THERMOSTAT

| PART # | 466E | 530E | DESCRIPTION | NOTE |
|--------------|------|------|---------------------|------|
| M-1830256C93 | 1 | 1 | Thermostat Kit 190° | |

WATER PUMP

| PART # | 466E | 530E | DESCRIPTION | NOTE |
|-----------|------|------|-------------|------|
| M-1817687 | 1 | 1 | Water Pump | |

CYLINDER HEAD PARTS

ESN ≤ 1194038

| PART # | 466E | 530E | DESCRIPTION | NOTE |
|-------------|------|------|---------------------------|---------------|
| M-1823875C2 | 6 | 6 | Intake Valve | |
| M-1821900C1 | 6 | 6 | Intake Seat - STD | |
| M-1821901C1 | 6 | 6 | Intake Seat - .002" OS | |
| M-1821902C1 | 6 | 6 | Intake Seat - .015" OS | |
| M-1842912C1 | 6 | 6 | Exhaust Valve | |
| M-1821903C3 | 6 | 6 | Exhaust Seat - STD | |
| M-1821904C3 | 6 | 6 | Exhaust Seat - .002" OS | |
| M-1821905C3 | 6 | 6 | Exhaust Seat - .015" OS | |
| M-1824644C1 | 24 | 24 | Valve Lock | |
| M-1824647C1 | 12 | 12 | Valve Guide | |
| M-677349C1 | 6 | 6 | Valve Spring - Intake | |
| M-1825540C1 | 6 | 6 | Valve Spring - Exhaust | |
| M-1824680C1 | 12 | 12 | Rotator Retainer w/Shield | |
| M-1824683C1 | 12 | 12 | Rotator Shield | |
| M-1823925C1 | 12 | 12 | Valve Stem Seal | Top hat style |
| M-1818778C2 | 6 | 6 | Injector Sleeve | |
| M-1809570C2 | 12 | 12 | Roller Tappet | |

CYLINDER HEAD PARTS

ESN 1194039 to 2000000

| PART # | 466E | 530E | DESCRIPTION | NOTE |
|-------------|------|------|---------------------------|---------------|
| M-1842913C1 | 6 | 6 | Intake Valve | |
| M-1827121C2 | 6 | 6 | Intake Seat - STD | |
| M-1830310C2 | 6 | 6 | Intake Seat - .002" OS | |
| M-1830311C2 | 6 | 6 | Intake Seat - .015" OS | |
| M-1842912C1 | 6 | 6 | Exhaust Valve | |
| M-1830711C1 | 6 | 6 | Exhaust Seat - STD | |
| M-1830712C1 | 6 | 6 | Exhaust Seat - .002" OS | |
| M-1830713C1 | 6 | 6 | Exhaust Seat - .015" OS | |
| M-1824644C1 | 24 | 24 | Valve Lock | |
| M-1824647C1 | 12 | 12 | Valve Guide | |
| M-677349C1 | 6 | 6 | Valve Spring - Intake | |
| M-1825540C1 | 6 | 6 | Valve Spring - Exhaust | |
| M-1824680C1 | 12 | 12 | Rotator Retainer w/Shield | |
| M-1824683C1 | 12 | 12 | Rotator Shield | |
| M-1823925C1 | 12 | 12 | Valve Stem Seal | Top hat style |
| M-1833382C1 | 6 | 6 | Injector Sleeve | |
| M-1809570C2 | 12 | 12 | Roller Tappet | |

DT466E/DT570/HT570

(ESN 2000000 to 3000000)

IN-FRAME KITS

| PART # | 466E | 570E | DESCRIPTION | NOTE |
|--------------|------|------|-----------------------------|------|
| M-1879703C94 | 1 | | In-Frame Kit (M-1842554C93) | |
| M-1879705C93 | 1 | | In-Frame Kit (M-1842556C94) | |
| M-1880991C94 | 1 | | In-Frame Kit (M-1876100C92) | |
| M-1885597C92 | 1 | | In-Frame Kit (M-1850403C92) | |

CYLINDER COMPONENTS

| PART # | 466E | 570E | DESCRIPTION | NOTE |
|--------------|------|------|---------------------|-------------|
| M-1842554C93 | 6 | | Cylinder Kit | |
| M-1842227C1 | 6 | | Piston | |
| M-1830724C92 | 6 | | Ring Set | |
| M-1874253C1 | 6 | | Piston Pin | M-1830060C1 |
| M-1818702C1 | 12 | | Pin Retainer | |
| M-1841326C1 | 6 | | Cylinder Liner | |
| M-1842115C1 | 6 | | Liner Seal Ring | |

| | | | | |
|--------------|----|--|---------------------|-------------|
| M-1842556C94 | 6 | | Cylinder Kit | |
| M-1842622C2 | 6 | | Piston | |
| M-1842551C92 | 6 | | Ring Set | |
| M-1874253C1 | 6 | | Piston Pin | M-1830060C1 |
| M-1818702C1 | 12 | | Pin Retainer | |
| M-1841326C1 | 6 | | Cylinder Liner | |
| M-1842115C1 | 6 | | Liner Seal Ring | |

| | | | | |
|--------------|----|--|---------------------|-------------|
| M-1876100C92 | 6 | | Cylinder Kit | |
| M-1847682C2 | 6 | | Piston | |
| M-1876098C91 | 6 | | Ring Set | |
| M-1874253C1 | 6 | | Piston Pin | M-1830060C1 |
| M-1818702C1 | 12 | | Pin Retainer | |
| M-1841326C1 | 6 | | Cylinder Liner | |
| M-1842115C1 | 6 | | Liner Seal Ring | |

| | | | | |
|--------------|----|--|---------------------|-------------|
| M-1850403C92 | 6 | | Cylinder Kit | |
| M-1858121C1 | 6 | | Piston | |
| M-1850402C91 | 6 | | Ring Set | |
| M-1874253C1 | 6 | | Piston Pin | M-1830060C1 |
| M-1818702C1 | 12 | | Pin Retainer | |
| M-1841326C1 | 6 | | Cylinder Liner | |
| M-1842115C1 | 6 | | Liner Seal Ring | |

DT466E/DT570/HT570

(ESN 2000000 to 3000000)

ENGINE BEARINGS

| PART # | 466E | 570E | DESCRIPTION | NOTE |
|--------------|------|------|------------------------------|------|
| M-1842570C92 | 6 | 6 | Connecting Rod Bearing STD | |
| M-1842900C92 | 6 | 6 | Connecting Rod Bearing .010" | |
| M-1842901C92 | 6 | 6 | Connecting Rod Bearing .020" | |
| M-1842902C92 | 6 | 6 | Connecting Rod Bearing .030" | |

| | | | | |
|--------------|---|---|--------------------|--|
| M-1842566C92 | 6 | 6 | Main Bearing STD | |
| M-1842567C92 | 1 | 1 | Main Bearing STD | |
| M-1842889C91 | 6 | 6 | Main Bearing .010" | |
| M-1842892C91 | 1 | 1 | Main Bearing .010" | |
| M-1842890C91 | 6 | 6 | Main Bearing .020" | |
| M-1842893C91 | 1 | 1 | Main Bearing .020" | |
| M-1842891C91 | 6 | 6 | Main Bearing .030" | |
| M-1842894C91 | 1 | 1 | Main Bearing .030" | |

| | | | | |
|-------------|---|---|--------------------------|--|
| M-675424C1 | 1 | 1 | Cam Bearing Front | |
| M-1842054C1 | 2 | 2 | Cam Bearing Intermediate | |
| M-1842053C1 | 1 | 1 | Cam Bearing Rear | |

| | | | | |
|-------------|---|---|------------------------|--|
| M-1872733C2 | 6 | 6 | Connecting Rod Bushing | |
|-------------|---|---|------------------------|--|

GASKET SETS

| PART # | 466E | 570E | DESCRIPTION | NOTE |
|--------------|------|------|------------------|------|
| M-1885598C91 | 1 | 1 | Upper Gasket Set | |

| | | | | |
|--------------|---|---|-------------------------------------|--|
| M-1842663C93 | 1 | 1 | Gasket Set - Front Cover/Front Half | |
| M-1842662C91 | 1 | 1 | Gasket Set - Front Cover/Rear Half | |

| | | | | |
|--------------|---|---|-------------------------------------|--|
| M-1842626C95 | 1 | 1 | Gasket Set - High Pressure Oil Rail | |
|--------------|---|---|-------------------------------------|--|

| | | | | |
|--------------|---|---|------------------------------------|--|
| M-1842623C93 | 1 | 1 | Gasket Set - Turbocharger Mounting | |
|--------------|---|---|------------------------------------|--|

| | | | | |
|--------------|---|---|-------------------------|--|
| M-1842588C93 | 1 | 1 | Gasket Set - EGR Cooler | |
| M-1842592C91 | 1 | 1 | Gasket Set - EGR Mixer | |

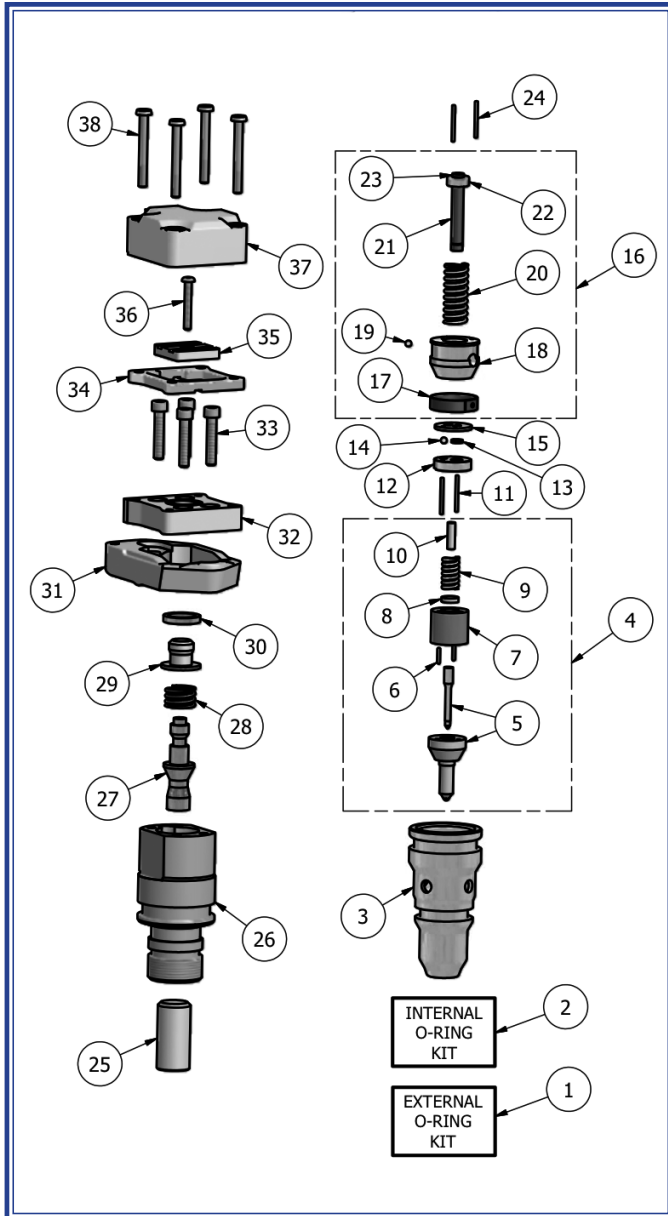
| | | | | |
|--------------|---|---|----------------------------------|--|
| M-1842624C92 | 6 | 6 | Seal Kit - Injector Installation | |
|--------------|---|---|----------------------------------|--|

CRANKSHAFT & SEALS

| PART # | 466E | 570E | DESCRIPTION | NOTE |
|--------------|------|------|----------------|------|
| M-1833095C93 | 1 | | Front Seal Kit | |
| M-1833096C94 | | 1 | Front Seal Kit | |

| | | | | |
|-------------|---|---|---------------|--|
| M-1841938C1 | 1 | 1 | Rear Seal Kit | |
|-------------|---|---|---------------|--|

HEUI® INJECTORS



| ITEM | PART NUMBER | DESCRIPTION | QTY REQ'D. |
|------|------------------------------------|--------------------------|------------|
| 1 | MCBS0008 | External O-ring kit | 1 |
| 2 | See Application Chart on Next Page | Internal O-ring kit | 1 |
| 3 | 8991079 | Nut | 1 |
| 4 | See Application Chart on Next Page | Nozzle Group | 1 |
| 5 | See Application Chart on Next Page | Nozzle Assembly | 1 |
| 6 | 8991002 | Dowel | 2 |
| 7 | 8991029 | Spacer Sleeve | 1 |
| 8 | 8991028 | Lift Spacer | 1 |
| 9 | 8991027 | Nozzle Spring | 1 |
| 9 | 8991106 | Nozzle Spring | 1 |
| 10 | 8991026 | Stop Pin | 1 |
| 11 | 8991001 | Dowel | 2 |
| 12 | 8991080 | Stop Pin | 1 |
| 13 | 8991081 | Check Plate | 1 |
| 14 | 8991082 | Check Ball | 1 |
| 15 | 8991083 | Stop Plate | 1 |
| 16 | See Application Chart on Next Page | Plunger and Barrel Group | 1 |
| 17 | REF | Retaining Spring | 1 |
| 18 | REF | Barrel | 1 |
| 19 | REF | Check Ball | 1 |
| 20 | REF | Spring | 1 |
| 21 | REF | Plunger | 1 |
| 22 | REF | Retaining Washer | 1 |
| 23 | REF | Retaining Ring | 1 |
| 24 | 8991001 | Dowel | 2 |
| 25 | See Application Chart on Next Page | Intensifier Piston | 1 |
| 26 | 8991091 | Piston & Valve Body | 1 |
| 27 | 8991092 | Poppet Valve | 1 |
| 28 | 8991093 | Poppet Spring | 1 |
| 29 | 8991094 | Sleeve | 1 |
| 30 | 8991095 | Poppet Shim | 1 |
| 31 | 8991096 | Clamp | 1 |
| 32 | 8991097 | Adapter | 1 |
| 33 | 8991099 | Assembly Screw | 4 |
| 34 | 8991100 | Solenoid Spacer | 1 |
| 35 | 8991101 | Armature | 1 |
| 36 | 8991102 | Adjusting Screw | 1 |
| 37 | 8991103 | Solenoid Spacer | 1 |
| 38 | 8991003 | Solenoid Screw | 4 |

HEUI® INJECTORS

APPLICATION CHART

| ITEM | PART NUMBER | DESCRIPTION | QTY REQ'D. |
|------|-------------|----------------------|------------|
| #2 | MCBS0007 | Internal O-Ring Kits | 1 |
| | MCBS0530 | Internal O-Ring Kits | 1 |
| #4 | 8991135 | Nozzle Group | 1 |
| | 8991136 | Nozzle Group | 1 |
| | 8991137 | Nozzle Group | 1 |
| | 8991145 | Nozzle Group | 1 |
| | 8991146 | Nozzle Group | 1 |
| | 8991155 | Nozzle Group | 1 |
| | 8991156 | Nozzle Group | 1 |
| | 8991165 | Nozzle Group | 1 |
| | 8991166 | Nozzle Group | 1 |
| | 8991175 | Nozzle Group | 1 |
| #5 | 8991035 | Nozzle Assembly | 1 |
| | 8991036 | Nozzle Assembly | 1 |
| | 8991037 | Nozzle Assembly | 1 |
| | 8991045 | Nozzle Assembly | 1 |
| | 8991046 | Nozzle Assembly | 1 |
| | 8991055 | Nozzle Assembly | 1 |
| | 8991056 | Nozzle Assembly | 1 |
| | 8991065 | Nozzle Assembly | 1 |
| | 8991066 | Nozzle Assembly | 1 |
| | 8991075 | Nozzle Assembly | 1 |

| ITEM | PART NUMBER | DESCRIPTION | QTY REQ'D. |
|---------|--------------------|--------------------------|--------------------|
| #16 | 8996000 | Plunger and Barrel Group | 1 |
| | 8996001 | Plunger and Barrel Group | 1 |
| | 8996060 | Plunger and Barrel Group | 1 |
| | 8996061 | Plunger and Barrel Group | 1 |
| | 8997100 | Plunger and Barrel Group | 1 |
| | 8997160 | Plunger and Barrel Group | 1 |
| | #25 | 8991110 | Intensifier Piston |
| 8991111 | | Intensifier Piston | 1 |
| 8991112 | | Intensifier Piston | 1 |
| 8991113 | | Intensifier Piston | 1 |
| 8991114 | | Intensifier Piston | 1 |
| 8991115 | | Intensifier Piston | 1 |
| 8991117 | | Intensifier Piston | 1 |
| 8991118 | Intensifier Piston | 1 | |

| BODY GROUP | MODEL YEAR | ENGINE | NAVISTAR INJECTOR P/N | P&B GROUP TYPE PLUNGER OD | NOZZLE P/N ORIFICES VOP (PSI) | NOZZLE GROUP | SEAL KITS: INTERNAL EXTERNAL | INTENSIFIER PISTON OD LENGTH |
|------------|----------------|---|--|------------------------------|-----------------------------------|--------------|------------------------------|------------------------------|
| AA | 94-96 94-98 | Navistar T444E Up to Engine S/N 460194 | 1822800C95 (3) 1816187C3 (4) 1822801C98 (1) 1822801C99 (1) 1821836C3 (2) | 8996000 Standard 6.0mm | 8991037 7 holes 2675 +/-125 | 8991137 | MCBS0007 MCBS0008 | 8991117 16mm 32.2mm |
| AB | 97-99 99 | Navistar T444E Engine S/N 460195 to 843989 | 1824582C94 1822803C1 1824583C97 1825125C1 | 8996060 Prime 6.0 mm | 8991037 7 holes 2675 +/-125 | 8991137 | MCBS0007 MCBS0008 | 8991114 16mm 29.7mm |
| AC | 94-96 | Navistar T444E (High Output), 210HP (High Torque) & 230HP | 1824455C94 1822890C1 1824456C96 1824472C1 | 8996001 Standard 6.0mm | 8991037 7 holes 2675 +/-125 | 8991137 | MCBS0007 MCBS0008 | 8991115 16mm 29.7mm |
| AD | 99-02 99-03 | Navistar T444E Engine S/N 843990 & Up | 1831551C1 1831550C1 1831487C92 1831487C93 1831489C1 | 8996061 Prime 6.0mm | 8991037 7 holes 2675 +/-125 | 8991137 | MCBS0007 MCBS0008 | 8991111 16mm 29.1mm |
| AE | 99-02 02-03 | Navistar T444E Engine S/N 1313828 & Up | 1833639C1 1833640C1 1833646C92 | 8996061 Prime 6.0mm | 8991037 7 holes 2675 +/-125 | 8991137 | MCBS0007 MCBS0008 | 8991110 16mm 29.1mm |

All manufacturer's names, numbers, symbols and descriptions are used for reference only and do not imply that any part listed is the product of these manufacturers.

HEUI® INJECTORS

APPLICATION CHART

| BODY GROUP | MODEL YEAR | ENGINE | NAVISTAR INJECTOR P/N | P&B GROUP TYPE PLUNGER OD | NOZZLE P/N ORIFICES VOP (PSI) | NOZZLE GROUP | SEAL KITS: INTERNAL EXTERNAL | INTENSIFIER PISTON OD LENGTH |
|------------|------------|---|--|------------------------------|-----------------------------------|--------------|------------------------------|------------------------------|
| BA | 95-97 | Navistar DT466E, 230HP (High Torque) & 250HP up to S/N 1084867 | 1823736C94 1819834C1 1824928C94 1824917C2 | 8996001 Standard 6.0mm | 8991055 5 holes 3700 +/-125 | 8991155 | MCBS0007 MCBS0008 | 8991115 16mm 29.7mm |
| BB | 95-97 | Navistar DT466E, 175 & 190HP up to S/N 1028710 | 1824742C91 1824739C1 1824929C94 1824918C2 | 8996001 Standard 6.0mm | 8991045 5 holes 3700 +/-125 | 8991145 | MCBS0007 MCBS0008 | 8991115 16mm 29.7mm |
| BC | 95-97 | Navistar DT466E, 195, 210 & 230HP up to S/N 1028710 | 1824743C91 1824740C1 1824930C94 1824919C2 | 8996001 Standard 6.0mm | 8991035 5 holes 3700 +/-125 | 8991135 | MCBS0007 MCBS0008 | 8991115 16mm 29.7mm |
| BD | 95-97 | Navistar I530E, 250, 275 & 300HP up to S/N 1084028 | 1824744C94 1824741C2 1824931C94 1824920C2 | 8997100 Standard 7.1mm | 8991065 5 holes 3700 +/-125 | 8991165 | MCBS0530 MCBS0008 | 8991113 17.5mm 29.3mm |
| BE | 97-99 | Navistar DT466E, 175 to 210 & 230HP Engine S/N 1028711 to 1194038 | 1829838C94 1829926C2 1829839C93 1829839C94 1829837C2 | 8996060 Prime 6.0mm | 8991035 5 holes 3700 +/-125 | 8991135 | MCBS0007 MCBS0008 | 8991112 16mm 29.1mm |
| BF | 98-99 | Navistar I530E, 250 to 320HP Engine S/N 1084029 to 1134350 | 1830145C92 1830147C2 1830146C92 1830146C93 1830148C2 | 8997160 Prime 7.1mm | 8991075 5 holes 3700+/-125 | 8991175 | MCBS0530 MCBS0008 | 8991118 17.5mm 26.7mm |
| BG | 97-99 | Navistar DT466E, 250HP S/N 1084868 to 1125227 | 1830155C91 1830157C1 1830156C91 1830573C2 | 8997160 Prime 7.1mm | 8991036 6 holes 3700+/-125 | 8991136 | MCBS0530 MCBS0008 | 8991118 17.5mm 26.7mm |
| BI | 99-UP | Navistar DT466E, 250HP S/N 1125228 & Up | 1830740C92 1830560C2 1830561C92 1830741C92 1830741C93 1830562C2 | 8997160 Prime 7.1mm | 8991046 6 holes 3700+/-125 | 8991146 | MCBS0530 MCBS0008 | 8991118 17.5mm 26.7mm |
| BJ | 99 | Navistar I530E, 250 to 320HP, Engine S/N 1134351 to 1194038 | 1830570C92 1830571C2 1830572C92 1830572C93 1830573C2 | 8997160 Prime 7.1mm | 8991036 6 holes 3700+/-125 | 8991136 | MCBS0530 MCBS0008 | 8991118 17.5mm 26.7mm |
| BN | 00-UP | Navistar I530E Engine 1194039 & Up | 1830693C1 1830694C91 1830692C91 1830691C1 | 8997160 Prime 7.1mm | 8991056 6 holes 3700+/-125 | 8991156 | MCBS0530 MCBS0008 | 8991118 17.5mm 26.7mm |
| BP | 00-UP | Navistar DT466E Transit | 1836252C91 1836253C1 1836251C91 1836250C1 | 8997160 Prime 7.1mm | 8991066 6 holes 3700+/-125 | 8991166 | MCBS0530 MCBS0008 | 8991118 17.5mm 26.7mm |



INTERSTATE-McBEE



GENERAL PRODUCTS WARRANTY

EXPORT & REMANUFACTURED ENGINE PARTS ALL FUEL INJECTION, NEW & REMANUFACTURED

COVERAGE

The parts furnished by Interstate-McBee are warranted to be free from defects in material and workmanship under normal use and service for a period of twelve (12) months, 100,000 miles or 2,000 hours of operation, whichever comes first, from date of first installation in an engine. This warranty applies to all owners in the chain of distribution, i.e. distributor, dealer, original owner, until the end of the respective periods of coverage and shall not apply to subsequent owners.

This warranty does not apply to parts provided by Interstate Interstate-McBee on a no-charge basis. In no event shall this warranty extend beyond eighteen (18) months from date of sale or manufacture.

INTERSTATE-McBEE RESPONSIBILITIES

The obligation of Interstate-McBee under this warranty, statutory or otherwise, is limited to the replacement or repair of Interstate – McBee parts, which our inspection discloses to our satisfaction to have been defective. Repair will be performed at our factory in Cleveland, OH or other Interstate-McBee approved facility. Proof of purchase is required.

OWNER'S RESPONSIBILITIES

Owner is responsible for the operation and maintenance of the engine as specified in the APPLICABLE O.E.M. OPERATION AND MAINTENANCE MANUALS. Owner must give notice within (30) days of any suspected failure and before expiration of applicable warranty to be considered warrantable. Owner will provide alleged defective and associated parts for examination by Interstate-McBee and, if requested, return same F.O.B. Cleveland, Ohio. Interstate-McBee further reserves the right to examine any engine subject to a claim under this warranty. Owner is responsible for all costs, including, but not limited to, repairs made to items other than the engine in which the parts are installed, "downtime" expenses and all business costs and losses resulting from a warrantable failure. **OWNER MUST GET AUTHORIZATION FROM INTERSTATE-McBEE'S WARRANTY ADMINISTRATOR (ALONG WITH A RETURN MATERIAL AUTHORIZATION FORM) PRIOR TO FILING A WARRANTY CLAIM WITHIN SAID WARRANTY PERIOD**

WARRANTY LIMITATIONS

Interstate-McBee is not responsible for failure resulting from owner or operator abuse or neglect, such as, but not limited to: operation without adequate coolant, fuel or lubricants; overfueling*; overspeeding; lack of maintenance of lubricating, coolant or air intake systems; improper storage, starting, warm-up, run-in or shut down practices. Interstate-McBee is not responsible for failures resulting from improper repair or installation, for parts that have been altered or for parts not approved by Interstate-McBee. This warranty does not apply to parts furnished on a no charge basis. Interstate-McBee does not warrant parts supplied by Interstate-McBee which bear the name and or trademark of another company. These parts are warranted by their manufacturers and not by Interstate-McBee. In no event shall this warranty extend beyond eighteen (18) months from the date of sale. **THERE ARE NO WARRANTIES EXPRESSED, IMPLIED OR STATUTORY, FOR THE PARTS NAMED HEREIN BEFORE, MADE BY INTERSTATE-McBEE OTHER THAN SET FORTH HEREIN.** We neither assume nor authorize any other persons to assume for us any other liability in connection with our products. **INTERSTATE-McBEE SHALL NOT BE RESPONSIBLE FOR ANY OTHER CONSEQUENTIAL DAMAGES OR CONTINGENT LIABILITIES.** Further, in no event shall Interstate-McBee bear any responsibility for any damages, which exceed the then available aggregate coverage provided under the terms and conditions of its product liability policy.

*covered on fuel injection products

This warranty shall be interpreted, governed and enforced in accordance with the laws of the State of Ohio, U.S.A. (For products not covered herein, see Interstate-McBee's Extended Warranty). Any actions or proceedings relating to this warranty must be filed or commenced within three (3) months of the alleged breach. If any of these warranty provisions or portions thereof is prohibited by law or by any court of competent jurisdiction, in any locality, its invalidity or unenforceability shall not affect the validity or the enforceability of any other warranty provisions or portions thereof.

This warranty applies to parts sold by Interstate on or after August, 2007.

INTERSTATE-McBEE, LLC 5300 LAKESIDE AVENUE, CLEVELAND, OHIO 44114-3996

EXTENDED WARRANTY

ENGINE PARTS – U.S.A. & CANADA

COVERAGE

Diesel Engine

New engine parts furnished by Interstate-McBee are warranted to be free from defects in material and workmanship under normal use and service for a period of twenty-four (24) months from the date of installation, without mileage or hour limitation. This warranty applies to all owners in the chain of distribution, i.e. distributor, dealer, original owner, until the end of the respective periods of coverage and shall not apply to subsequent owners.

Natural Gas or Methane Engine and Prime Power Generation

New engine parts furnished by Interstate-McBee are warranted to be free from defects in material and workmanship under normal use and service, for a period of twelve (12) months from the date of installation. This warranty applies to all owners in the chain of distribution, i.e. distributor, dealer, original owner, until the end of the respective periods of coverage and shall not apply to subsequent owners.

Castings

Cylinder head and cylinder block castings are warranted for 12 months from date of installation; part replacement only, no progressive damage, no labor.

Fuel Injection parts and countries not included here-in are covered under a separate warranty titled "Interstate-McBee, LLC LIMITED General Products warranty." This warranty does not apply to parts provided by Interstate-McBee on a no-charge basis. In no event shall this warranty extend beyond thirty (30) months from date of sale or manufacture.

INTERSTATE-MCBEE RESPONSIBILITIES

Interstate-McBee will pay only for parts and labor needed to repair damages directly resulting from an above defined warranty failure to the functional condition existing immediately prior to the failure, including progressive damage to the engine in which the warrantable part was installed, provided Interstate-McBee's inspection of said failed part or parts discloses to our satisfaction to have been defective. Labor cost will be paid in accordance with published labor rates, but not to exceed reasonable flat rates times nor Interstate McBee's standard hourly rate. No overtime or holiday rates will be allowed. Only new or rebuilt Interstate-McBee or Interstate-McBee approved parts will be used in making the repair.

OWNER'S RESPONSIBILITIES

Owner is responsible for the operation and maintenance of the engine as specified in the APPLICABLE O.E.M. OPERATION AND MAINTENANCE MANUALS. Owner must give notice within (30) days of any suspected failure and before expiration of applicable warranty to be considered warrantable. Owner will provide alleged defective and associated parts for examination by Interstate-McBee and, if requested, return same F.O.B. Cleveland, Ohio. Interstate-McBee further reserves the right to examine any engine subject to a claim under this warranty. Approved warranty work is to be performed by an authorized Interstate-McBee Distributor or Dealer or other Interstate-McBee approved facility. Owner is responsible for all costs, including, but not limited to, repairs made to items other than the engine in which the parts are installed, "downtime" expenses and all business costs and losses resulting from a warrantable failure. OWNER MUST GET AUTHORIZATION FROM INTERSTATE-MCBEE'S WARRANTY ADMINISTRATOR (ALONG WITH A RETURN MATERIAL AUTHORIZATION FORM) PRIOR TO FILING A WARRANTY CLAIM WITHIN SAID WARRANTY PERIOD

WARRANTY LIMITATIONS

Interstate-McBee is not responsible for failure resulting from owner or operator abuse or neglect, such as, but not limited to: operation without adequate coolant, fuel or lubricants; overfueling; overspeeding; lack of maintenance of lubricating, coolant or air intake systems; improper storage, starting, warm-up, run-in or shut down practices. Interstate-McBee is not responsible for failures resulting from improper repair or installation, for parts that have been altered or for parts not approved by Interstate-McBee. This warranty does not apply to parts furnished on a no charge basis. Interstate-McBee does not warrant parts supplied by Interstate-McBee which bear the name and or trademark of another company. These parts are warranted by their manufacturers and not by Interstate-McBee. In no event shall this warranty extend beyond (30) months from the date of sale. THERE ARE NO WARRANTIES EXPRESSED, IMPLIED OR STATUTORY, FOR THE PARTS NAMED HEREIN BEFORE, MADE BY INTERSTATE-MCBEE OTHER THAN SET FORTH HEREIN. We neither assume nor authorize any other persons to assume for us any other liability in connection with our products. INTERSTATE-MCBEE SHALL NOT BE RESPONSIBLE FOR ANY OTHER CONSEQUENTIAL DAMAGES OR CONTINGENT LIABILITIES. Further, in no event shall Interstate-McBee bear any responsibility for any damages, which exceed the then available aggregate coverage provided under the terms and conditions of its product liability policy. Fuel Injection parts and countries not included here-in are covered under a separate warranty titled "Interstate-McBee, LLC LIMITED General Products warranty."

This warranty for the U.S.A. & Canada shall be interpreted, governed and enforced in accordance with the laws of the State of Ohio, U.S.A. (For products not covered herein, see Interstate-McBee's General Product Warranty.) Any actions or proceedings relating to this warranty must be filed or commenced within three (3) months of the alleged breach. If any of these warranty provisions or portions thereof prohibited by law or by any court of competent jurisdiction, in any locality, its invalidity or unenforceability shall not affect the validity or enforceability of any other warranty provisions or portions thereof. This warranty applies to parts sold by Interstate-McBee on or after August 2007.

INTERSTATE-MCBEE L.L.C, 5300 LAKESIDE AVENUE, CLEVELAND, OHIO 44114-3996

U.S.A. Presidential Award



For Excellence in Export



INTERSTATE-McBEE



OHIO

5300 Lakeside Avenue
Cleveland, OH 44114 U.S.A.
Tel: 216-881-0015
FAX: 216-881-0805

E-mail: sales@interstate-mcbee.com

CALIFORNIA

13137 Arctic Circle
Santa Fe Springs, CA 90670 U.S.A.
Tel: 562-356-5414
FAX: 562-926-2452

FLORIDA

9955 NW 58th Street
Doral, FL 33178 U.S.A.
Tel: 305-863-6650
FAX: 305-863-6272

Serving the diesel industry since 1947 with quality fuel injection and engine parts.